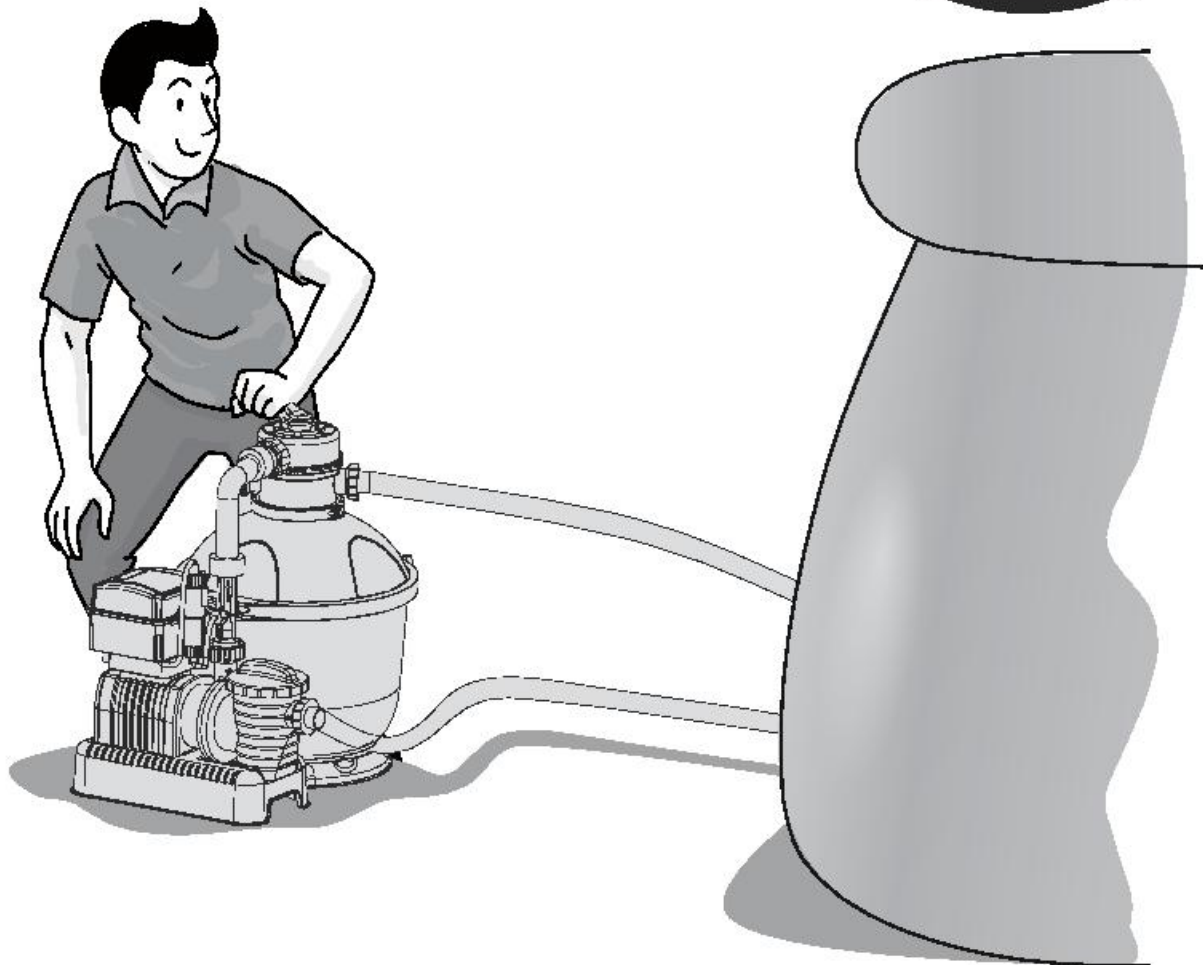


Bestway.

#58402

220-240V~50Hz, 230W

Hmax 1.5m Hmin 0.19m IPX5



FLOWCLEAR™

Sand Filter with Ozonator

OWNER'S MANUAL

www.bestway-global.com

www.bestway-service.com



SAFETY INSTRUCTIONS

WARNING

IMPORTANT SAFETY INSTRUCTIONS - READ AND FOLLOW ALL SAFETY INSTRUCTIONS - SAVE THESE INSTRUCTIONS

When installing and using this electrical equipment, basic safety precautions should always be followed, including the following:

- The pump is to be supplied by an isolating transformer or supplied through a residual current device (RCD) having a rated residual operating current not exceeding 30mA.
- The appliance must be supplied by earthed power source.
- **RISK OF ELECTRIC SHOCK** - The pump cannot be used while people are inside the pool. Forbid the access of the pool in case of damage of the sand filter.
- **DO NOT BURY CORD.** Locate cord to minimize abuse from lawn mowers, hedge trimmers, and other equipment.
- To reduce the risk of electric shock, replace damaged cord immediately.
- If the supply cord is damaged, it must be replaced by the manufacturer, its service agent or similarly qualified persons in order to avoid a hazard.
- Extension cords can't be used.
- Risk of electric shock. Using the sand filter with an unmatched electrical supply is dangerous and will permanently damage the sand filter.
- Do not remove the grounding prong or modify the plug in anyway. Do not use adaptor plugs. Consult a qualified electrician for any questions relating to validity of your plugs or grounding.
- Handle the sand filter with care. Do not pull or carry the sand filter by the power cord. Never pull a plug from the outlet by yanking the power cord. Keep cord free from abrasions. Sharp objects, oil, moving parts, and heat should never be exposed to the sand filter.
- Always unplug this product from the electrical outlet before removing, cleaning, servicing or making any adjustment to the product.
- This appliance is not intended for use by persons (including children) with reduced physical, sensory or mental capabilities, or lack of experience and knowledge, unless they have been given supervision or instruction concerning use of the appliance by a person responsible for their safety. Children should be supervised to ensure that they do not play with the appliance.
- Don't plug or unplug the appliance if hand is wet.
- Always unplug the appliance:
 - On raining days
 - Before cleaning or other maintenance
 - Leave it unattended on holidays
- Safekeeping the instruction. For reconstruction the pool set every time, please always refer to the instructions.
- If instruction is missed, please contact with Bestway or search it in website:
www.bestway-service.com
- Electric installations should follow national wiring rules. Consult a qualified electrician for any questions.
Pool fencing laws affect this product, consult your local council.
Empty and store safely when not in use.

CAUTION: This sand filter is for use with storable pools only. Do not use with permanently-installed pools. A storable pool is constructed so that it is capable of being readily disassembled for storage and reassembled to its original integrity. A permanently-installed pool is constructed in or on the ground or in a building such that it cannot be readily disassembled for storage.

Warning: Parts containing live parts, except parts supplied with safety extra-low voltage not

exceeding 12V, must be inaccessible to a person in the pool; Parts incorporating electrical components, except remote control devices, must be located or fixed so that they cannot fall into the swimming pool.

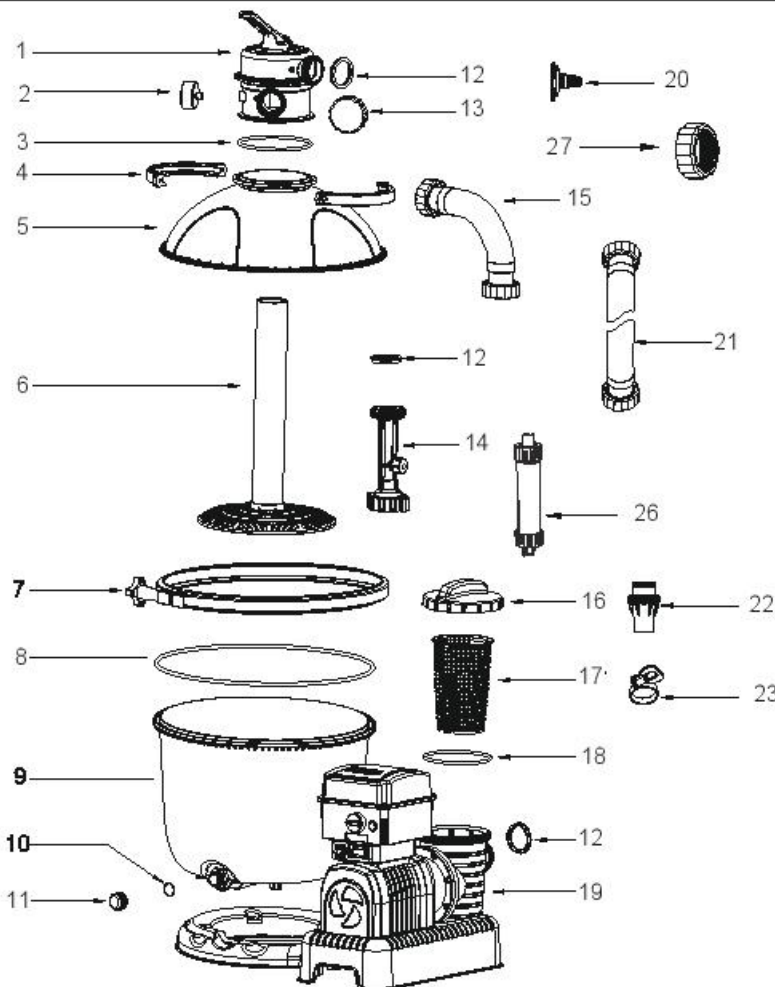
NOTES:

- Place the sand filter on solid, level ground.
- Pay attention to position pool and sand filter so adequate ventilation, drainage, and access for maintenance is available. Never place the sand filter in an area that may accumulate water, or on a walking path with lots of foot traffic.
- It is necessary to have the plug accessible after installation of the pool. The plug of the sand filter shall be at least 3.5m away from the pool.
- Atmospheric conditions may affect the performance and life span of the sand filter; take adequate precautions to protect the sand filter from unnecessary wear and tear that may occur during periods of cold or hot weather and/or exposure to sun.
- Please examine and verify all sand filter components are present before use. Notify Bestway at the customer service address listed on this manual for any damaged or missing parts at the time of purchase.
- It is imperative to change as soon as possible all deteriorated parts. Only use parts approved by the manufacturer.
- Do not allow children or adults to lean or sit on the apparatus.
- Do not add chemicals to the sand filter.
- When chemical products are used to clean the pool water, it is recommended to respect a minimum filtration time to preserve the health of swimmers which depends on compliance of health regulation.
- This product is not intended for commercial use.
- Cleaning and user maintenance must be performed by an adult above 18 years old who is familiar with the risk of electric shock.
- When the appliance will be not used for long time, such as in the winter, the pool set should be disassembled and stored indoor.
- Caution Read the instruction before using the appliance and installation/reassembly every time.

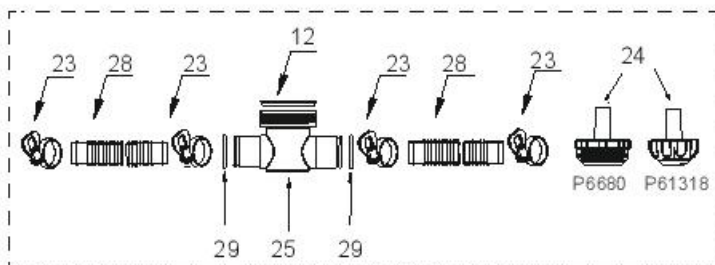
SAVE THESE INSTRUCTIONS

PARTS REFERENCE OVERVIEW

Before assembling the sand filter, take a few minutes to become familiar with all the sand filter parts.

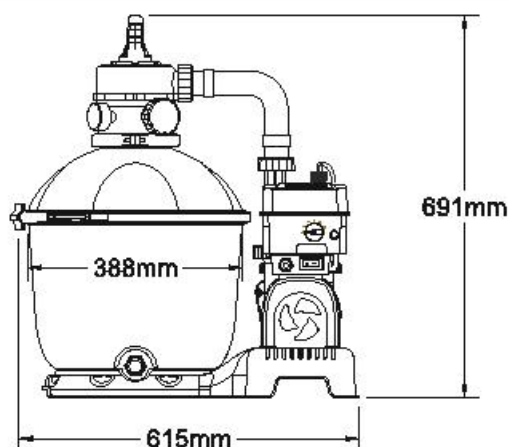


REF.NO.	DESCRIPTION	QTY.	PART NO.
1	Control Valve	1	P61140
2	Pressure Gauge	1	P61138
3	O-ring	1	P6149
4	Top Flange Clamp	2	P6553
5	Top Tank	1	P6564
6	Hub	1	P6557
7	Flange Clamp	1	P6558
8	O-ring	1	P6559
9	Bottom tank	1	P6906
10	Drain Washer	1	P6581
11	Drain Valve Cap	1	P6580
12	Washer	6	P6029
13	Port D Cap	1	P6540
14	Venturi Tube	1	P6792
15	Piping	1	P6710
16	Strainer Cover	1	P6561
17	Strainer	1	P6562
18	Seal Ring	1	P6563
19	Pump	1	P6851
20	Garden Hose Adaptor	1	P6614
21	Hose(Φ38mm)	2	P6517
22	Adaptor	2	P6916
23	Hose Clamps	4	P6124
26	Checkvalve	1	P6H1302
27	Adapter Nut	1	P6615



Optional Parts

12	Washer	1	P6029
23	Hose Clamps	1	P6124
24	Debris Screen	2	P6680
	Debris Screen	1	P61318
25	T-Joint	1	P61408
28	Hose (Φ32mm)	2	P6019
29	O-Ring	2	P6005



SPECIFICATIONS

Filter Diameter:	388mm
Effective Filter Area:	0.116m ² (1.25ft ²)
Ozone Output:	150mg/h
Max. Operating Pressure:	0.83Bar (12PSI)
Working sand filter pressure:	<0.28Bar (4PSI)
Max. Water Temperature:	35°C
Sand:	Not included
Sand Size:	#20 silica sand, 0.45-0.85mm
Sand Capacity:	Approximately 25kg

INTRODUCTION

What is Ozone?

Ozone, (O₃) is sometimes called "activated oxygen". It contains three atoms of oxygen rather than the two atoms we normally breathe. It is the second most powerful sterilizer in the world and can be used to destroy bacteria, viruses and odors.

	Ideal
Free Chlorine	2.0- 4.0ppm
Total Chlorine	<4ppm
pH	7.4 - 7.8
Total Alkalinity	80 - 120ppm
Total Hardness	250 - 500ppm

POOL WATER CHEMISTRY

Optimum Pool Water Chemistry Conditions

It is recommended that the following pool water chemistry conditions should be maintained to help protect pool users, pool related equipment and surfaces in and around the pool. These values are important to maintain pool equipment and prevent corrosion or other problems from occurring. This product is guaranteed to operate properly only if these conditions are met. For more information, please consult your local swimming pool dealer for water treatment.

- **Free Chlorinies** is the chlorine residual present in pool water.
- **Total Chlorinies** is the sum of both free chlorine and combined chlorine. If your total chlorine test strip reading is higher than your free chlorine reading, you need to shock treat your pool.
- **pH** - A value that indicates how acidic or alkaline a solution is.

IMPORTANT: If pH is too low, it will corrode metal, irritate eyes & skin and reduce total alkalinity. If pH is too high, it will result in scale formation, cloudy water, eye & skin irritation and poor chlorine efficiency.

- **Total Alkalinity** indicates the degree of the water's resistance to change in pH. It determines the speed and ease of pH change, so always adjust total alkalinity before adjusting the pH level.

IMPORTANT: If total alkalinity is too low, it will corrode metal and irritate eyes & skin. Low alkalinity will cause the pH to be unstable. Any chemical added to the water will have an effect on it's pH. If total alkalinity is too high, it will result in scale formation, cloudy water, eye & skin irritation and poor chlorine efficiency.

- **Total Hardness** is the amount of calcium and magnesium in your pool water. If this amount is too high, your water will appear cloudy. When water's total hardness is too low, it will slowly dissolve plastic walls of the pool and corrode metal fixtures.

OPERATING TIME TABLE WITH OZONATOR

NOTE: We recommend setting the operation time of Ozonator as indicated in the tables below, otherwise it could result in bad odors or the pool liner may turn yellow due to the excessive production of Ozone (O₃).

Pool Size (Bestway Above Ground Pools)		Daily Operation Time for Ozonator
		Hours/day
Fast Set™ Pools	4.57m x 9.1cm (15' x 36")	4
	4.57m x 1.07m (15' x 42")	4
	4.57m x 1.22m (15' x 48")	4
	5.49m x 1.22m (18' x 48")	6
Oval Fast Set™ Pools	4.89m x 3.05m x 1.07m (16' x 10' x 42")	4
	5.49m x 3.66m x 1.22m (18' x 12' x 48")	4
	6.10m x 3.66m x 1.22m (20' x 12' x 48")	6
Steel Pro™ Frame Pools	3.66m x 1.00m (12' x 39.5")	4
	3.66m x 1.22m (12' x 48")	4
	4.57m x 9.1cm (15' x 36")	4
	4.27m x 1.22m (14' x 48")	4
	4.57m x 1.22m (15' x 48")	6
	4.89m x 1.22m (16' x 48")	6
	5.49m x 1.22m (18' x 48")	6
	5.49m x 1.32m (18' x 52")	8
Rectangular Frame Pools	4.12m x 2.01m x 1.22m (162" x 79" x 48")	4
	5.49m x 2.74m x 1.22m (18' x 9' x 48")	6
	6.71m x 3.66m x 1.32m (22' x 12' x 52")	8
	7.32m x 3.66m x 1.32m (24' x 12' x 52")	10
Hydrium Neptune Pool Set	3.05m x 1.22m (10' x 48")	4
Hydrium Poseidon Pool Set	3.66m x 1.22m (12' x 48")	4
Hydrium Titan Pool Set	4.89m x 3.66m x 1.22m (16' x 12' x 48")	4

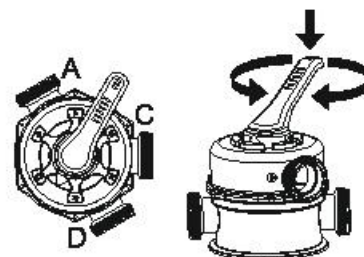
Water capacity (Calculated at 90% for Frame Pool and 80% for Fast Set & Oval Pool)		Daily Operation Time for Ozonator
Gallons	Liters	Hours/day
0-2,000	0-7,570	2.0
2,001-4,000	7,575-15,140	4.0
4,001-6,000	15,145-22,710	6.0
6,001-8,000	22,716-30,280	8.0
8,001-10,000	30,287-37,850	10.0
10,001-12,000	37,858-45,420	12.0

CONTROL VALVE OVERVIEW

WARNING: To prevent equipment damage and possible injury, always switch off sand filter before changing the Control Valve function. Changing valve positions while the pump is running can damage the Control Valve, which may cause personal injury or property damage.


How to Use the Control Valve


Press down on the Control Valve handle and rotate to desired function.




CONTROL VALVE FUNCTIONS

The Control valve is used to select 6 different filter functions: Filter, Rinse, Circulate, Backwash, Closed and Drain.

 **Filter:** This function is used to filter pool water and should be positioned 99% of the time. Water is pumped through the sand filter, where it is cleaned and returned to the pool.

 **Circulate:** This function circulates pool water bypassing the sand filter; use function if the filter is broken to collect debris in the Debris Screens.

 **Backwash:** This function is used to clean the sand bed; water is pumped down through the Collector Hub, upwards through the sand bed, and deposited out of Port D.



Rinse: This function for initial startup, cleaning, and sand bed leveling after Backwash; water is pumped downwards through the sand bed, up through the Collector Hub and deposited out of the valve Port D.



Drain: This function drains water from the pool; another filter bypass setting, water is pumped and deposited out of Port D, instead of returning it to the pool.



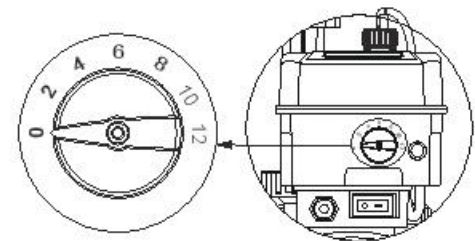
Closed: This function stops water flowing between the sand filter and the pool.

NOTE

- Be sure all provisions for wastewater disposal meet applicable local, state or national codes. Do not discharge water where it will cause flooding or damage.
- When the Control Valve is set to the Backwash, Rinse, or Drain position, water will discharge from Port D on the Control Valve.
- Do not switch on or operate the sand filter with the Control Valve set to the Closed function or it will seriously damage the sand filter.
- Do not set the Control Valve between two functions, or it will lead to leaking.
- To avoid water leakage, screw the Port D Cap onto the Control Valve Port D before operating the sand filter.

TIMER INTRODUCTION

- "0" The Ozonator is off.
- "2" The Ozonator will produce Ozone (O₃) for 2 hours.
- "4" The Ozonator will produce Ozone (O₃) for 4 hours.
- "6" The Ozonator will produce Ozone (O₃) for 6 hours.
- "8" The Ozonator will produce Ozone (O₃) for 8 hours.
- "10" The Ozonator will produce Ozone (O₃) for 10 hours.
- "12" The Ozonator will produce Ozone (O₃) for 12 hours.



NOTE: When the light beside the time is green, the Ozonator is in working status.

NOTE: Set the timer to "0" to Backwash, Rinse the sand bed and Circulate or Drain the pool water.

NOTE: When the operation time ends, the Ozonator automatically stops producing Ozone (O₃). After 24 hours, it restarts automatically and continues producing Ozone (O₃).

NOTE: The Sand Filter will operate for 24 hours, independent from the Ozonator operation time.

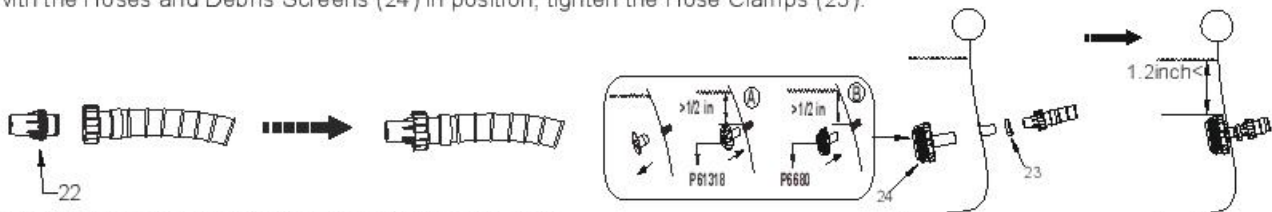
NOTE: If a power outage occurs, or the power cord is unplugged, or if the on/off switch is turned off, the Ozonator operating time and the 24 hour cycle will automatically be reset.

NOTE: If the warning signal is beeping quickly, the Ozone Generator has reached its life-span, and need to be replaced with a new one. Please contact your local Bestway Aftersales Service.

HOSE ADAPTOR FUNCTIONS

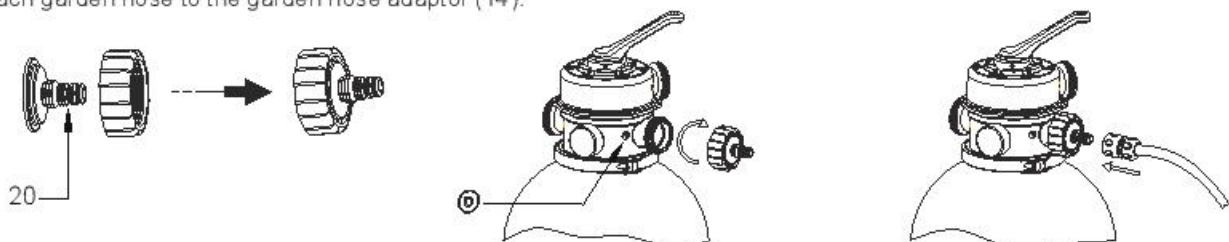
Pool with Valves (Φ3.2cm)

- 1) Connect the Adaptors (22) to the Hose .
- 2) Attach the Hoses to the corresponding letters on the pool.
- 3) Attach the Hoses to the Sand filter by pressing the hose fitting on the pump port. Screw the threaded locking rings into position; ensure the corresponding letters on both the pool and the Sand filter match (A to A, B to B).
- 4) Remove the Stopper Plugs from the pool's inlet and outlet valves and insert with the Debris Screens (24).
- 5) With the Hoses and Debris Screens (24) in position, tighten the Hose Clamps (23).



GARDEN HOSE ADAPTOR FUNCTIONS

1. Assemble the garden hose adaptor (20).
2. Screw the garden hose adaptor (20) onto port D of the sand filter.
3. Attach garden hose to the garden hose adaptor (14).



NOTE:

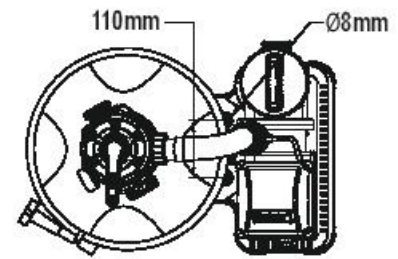
1. Garden hose adaptor can be used for draining only, and can only be assembled to port D of the sand filter.
2. Always switch off and unplug the sand filter before assembling the garden hose adaptor, and set the control valve to Closed position.
3. Ensure the washer is in position before assembling the garden hose adaptor.

Section I: Assembly (You will need a Phillips screwdriver).

1. Carefully remove all components from the package and check to ensure nothing is damaged. If equipment is damaged, immediately notify the retailer from where the equipment was purchased.

2. The sand filter should be placed on solid, level ground, preferably a concrete slab. Position the sand filter so the Ports and Control Valve are accessible for operation, servicing and winterizing.

3. IEC60335-2-41 TEST standard requires the sand filter to be vertically fixed on ground or a certain pedestal made of wood or concrete before use to prevent the sand filter from accidentally falling. Fully assembled sand filter will exceed 18kg. The mounting holes should be 8mm in diameter and spaced 110mm apart. Use two bolts and nuts with a maximum of 8mm in diameter to fasten the sand filter to the pedestal.



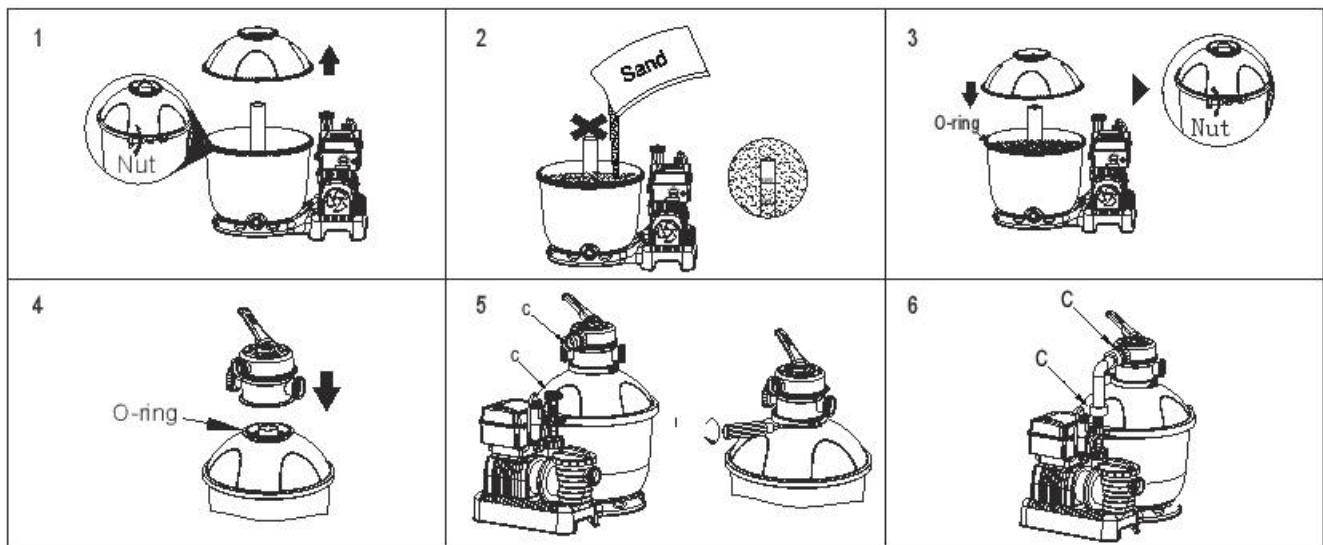
Loading Pool-Grade Filter Sand.

NOTE: Use only special pool-grade filter sand, free of all limestone or clay: #20 Silica sand 0.45-0.85mm, approximately one 25kg bag should suffice. If you do not use the recommended size of filter sand, filtering performance will be reduced and the sand filter may be damaged, thereby voiding the warranty.

NOTE: To avoid damaging the skimmer when adding sand, pour some water into the bottom tank.

NOTE: SAND NOT INCLUDED.

1. Turn the nut counter clockwise to release the flange clamp and remove the Top Tank.
2. Add the sand slowly so the weight of the sand doesn't damage the skimmer on the hub, until it reaches between the mark "MAX" and "MIN". Do not pour the sand into the pipe of the hub. #20 silica sand 0.45-0.85mm, approximately 25 kg.
3. Ensure the o-ring is in place on the rim of the bottom tank. Make sure the O-ring and the rim of the bottom tank are clean without nicks, tears, scrapes or sand. Attach the top tank to the bottom tank, place the flange clamp over the seam and turn the Nut clockwise to fasten it.
4. Attach the control valve to the top tank, ensuring the o-ring is in place on the rim of the top tank. Make sure the o-ring and the rim of the top tank are clean without nicks, tears, scrapes or sand and that the vertical pipe of the hub is inserted into the base of the control valve.
5. Make sure port C on the control valve is aligned with port C on the pump. Attach the top flange clamp and screw into position.
6. Attach the piping to pump port C and to control valve port C, screw the threaded locking rings into position. Make sure the washer is properly positioned on both ends of the piping.



Section II: Hose Configuration for Backwashing and Rinsing

NOTE: Ensure the control valve is set to the closed function.

Your pool should be filled with water, make certain both of the pool's debris screens are fully submerged in water.

Please check if your product includes a T-Joint (25) (see Fig.E).

If yes, assemble your sand filter referring to method A;

if no, assemble your sand filter referring to method B.

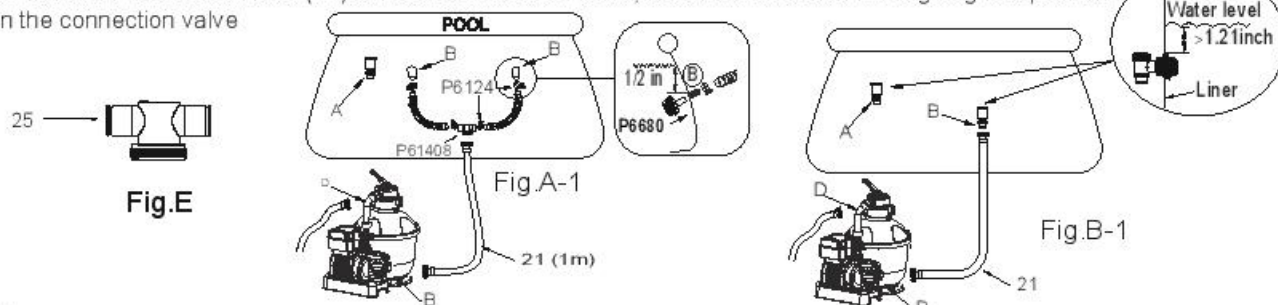
Method A (see Fig.A-1)

1. Attach one end of the hose (21) to the sand filter's Port B; screw the threaded locking ring into position.
2. Connect both ends of hoses (Φ32mm) to the pool valves marked "B", place the loose Hose Clamps (P6124) on the end of Hoses. Connect both free ends of hoses (Φ32mm) to the T-joint (P61408) by tightening the Hose Clamps.

- Screw the other end of the hose (21) to the T-joint (25), screw the threaded locking ring into position.
- Remove the Stopper Plugs from the pool's outlet valves (marked "B") and insert with the Debris Screens. With the Hoses and Debris Screens in position, tighten the Hose Clamps.

Method B (see Fig.B-1)

- Attach one Hose (21) to the sand filter's Port B; screw the threaded locking ring into position.
- Screw the other end of the Hose (21) to Port B connection valve; screw the threaded locking ring into position.
- Open the connection valve



NOTE: You can refer to pool manual for connection valve's installation instructions.

- Screw the other Hose to Port D and place the opposite end in drain area.

Section III: Backwashing and Rinsing the Sand Bed

Backwash and Rinsing must be performed to prepare the pump for its first use and to wash the sand.

CAUTION: DO NOT DRY RUN THE SAND FILTER

- Press down on the Control Valve handle and rotate to the Backwash function.
- Set the timer to "0".
- Insert the plug into a residual current device or a circuit of alternative residual power (for France only), then switch on the sand filter and run the sand filter for 3-5 minutes, or until the water runs clear.
- Switch off the sand filter and set the control valve to the rinse function.
- Switch on the sand filter and run the sand filter for 1 min. This circulates water backwards through the sand filter and drains water out Port D.
- Switch off the sand filter. Set the control valve to the closed function.
- Top up pool water if required.

IMPORTANT: This procedure removes water from the pool, which you'll need to replace.

Switch off the sand filter immediately if water levels near the pool's Inlet and Outlet valves.

DO NOT DRY RUN THE SAND FILTER.

Section IV: Complete Sand Filter Installation

Connect the Third Hose

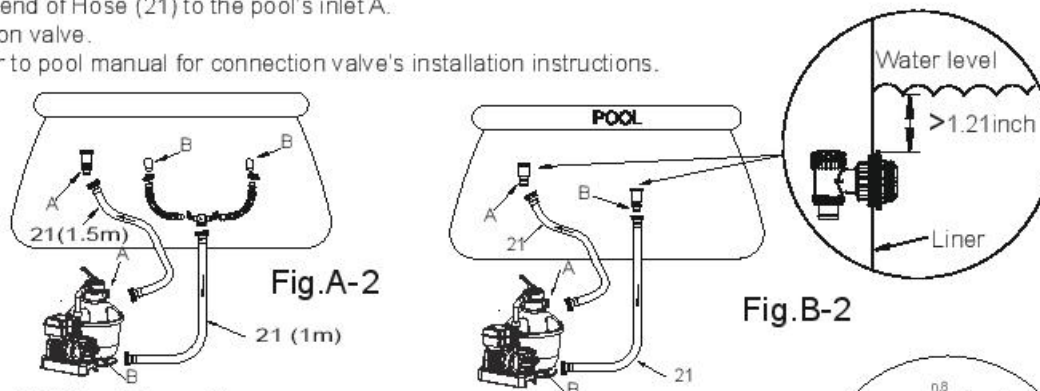
NOTE: Before install the hoses please be sure that the hydraulic connectors are not close.

NOTE: Ensure the control valve is set to the closed function.

Assemble your product referring to Fig. A-2 if there is a T-joint (Fig. E), and referring to B-2 if not. The assembly methods are the same.

- Detach the Hose (21) from Port D.
- Attach the Hose (21) to the Control Valve's Port A; screw the threaded locking ring into position.
- Connect the other end of Hose (21) to the pool's inlet A.
- Open the connection valve.

NOTE: You can refer to pool manual for connection valve's installation instructions.



Section V: Sand Filter Operation

- Now the sand filter is ready for use. Set the control valve to the filter function.

NOTE: To prevent the risk of electrical shock dry any excess water from yourself and sand filter.

- Switch on the sand filter to run it.

NOTE: The sand filter has now started its filtering cycle. Check that water is returning pool and take note of the filter pressure on pressure gauge. Generally, the recommended filter pressure is less than 0.28Bar (4.0PSI) when it is running.



Section VI: Ozonator Operation

IMPORTANT: To achieve optimum performance from the ozonator system, the pool must be as clean as possible to begin.

- Contact your local pool supply shop and add chemicals according to their instructions.
 - Backwash or clean the sand filter in accordance with the Maintenance part.
 - Test water chemistry and adjust pH between 7.4 and 7.6, free chlorine between 2.0 and 4.0ppm, total alkalinity between 80 and 120ppm.
- Set the control valve to the filter function.
- Set the operating time for the ozonator with the timer (see timer introduction part).
- Switch on the sand filter to run it.

Sand Filter Maintenance

CAUTION: You must ensure the sand filter is switched off and unplugged before any maintenance begins or severe risk of injury or death exists. As dirt builds up in the sand filter, the pressure reading on pressure gauge will increase. When the pressure gauge is 0.28Bar (4.0PSI) or higher, or water flow to the pool is too low, it is time to clean the sand.

To clean the sand bed, follow all instructions outlined previously in Section II and Section III: Backwash and Rinsing.

NOTE:

- The Pressure Gauge is just used for measuring the water pressure, not used for precision measurement.
- We recommend you clean the sand bed once a week or less regularly depending on how often the pool is used.

Cleaning the Strainer

- Switch off the sand filter and set the control valve to the closed function.
- Close the connection valves.
- Remove the strainer cover by unscrewing it.
- Take out the strainer, remove any debris.
- Put the strainer back into position. Ensure the hole in the strainer is aligned.
- Ensure the seal ring is in place. Secure the strainer cover back.
- Open the connection valves.

NOTE: The Strainer must be emptied and cleaned periodically. A dirty or blocked strainer will reduce the performance of the sand filter.

Lowering or Draining Pool Water

- Switch off the sand filter and set control valve to the drain function.
- Detach the hose from the connection valve's port A and sand filter port A and attach to port D.
- Switch on the sand filter to remove pool water.

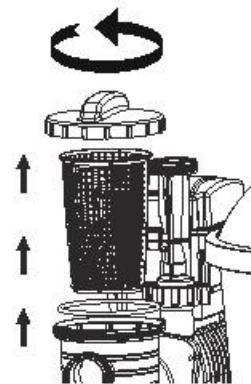
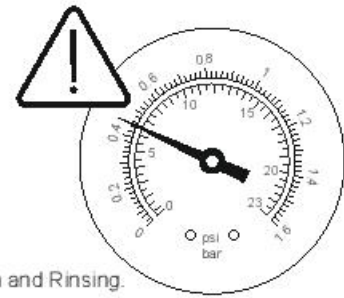
WARNING: DO NOT DRY RUN THE SAND FILTER.

Storage and Winterization

NOTE: Do not leave the product out in the open air for long periods of time. When it is not in use, please clean and dry it and then store it in a cool, dry place.

In areas that have freezing winter temperatures, pool equipment must be winterized to protect against damage. Allowing water to freeze will damage the sand filter and void warranty.

- Backwash the sand filter as previously outlined in Section II and Section III.
- Drain the pool according to the pool owner's manual.
- Unscrew the drain valve cap at the bottom of the tank and release the remaining water.
- Disconnect the Hoses from the pool and the sand filter.
- Completely pour the sand out of the tank and dry all components.
- Store the sand filter in a dry location out of child's reach.



TROUBLESHOOTING		
Problems	Probable Causes	Solutions
Sand is flowing to the pool	<ul style="list-style-type: none"> Sand is too small Move the control valve from the backwash to the filter function without stop the sand filter The level of the sand is too high The skimmer is broken 	<ul style="list-style-type: none"> Recommend 0.45mm to 0.85mm #20 silica sand Stop the sand filter every time set the control valve Check if the level of the sand is between the marked "MAX" and "MIN" on the hub Replace the skimmer
No water flow	<ul style="list-style-type: none"> Stopper plugs are not removed The control valve is set to Closed The strainer is blocked Sand filter broken 	<ul style="list-style-type: none"> Remove the stopper plugs and insert the debris screens Set to filter function Clean the strainer Call for service
Excessive filter pressure	<ul style="list-style-type: none"> Dirty filter Calcified sand bed Insufficient backwashing The pressure gauge is broken 	<ul style="list-style-type: none"> Backwash Inspect sand and change if necessary Backwash until water runs clear Replace the pressure gauge
Control Valve leaks from the port D	<ul style="list-style-type: none"> Control Valve is set between two functions The gasket is broken 	<ul style="list-style-type: none"> Set to one function Replace the gasket
Connectors leaks	<ul style="list-style-type: none"> Washer of the connectors not in place Washer of the connectors is broken Loose hoses 	<ul style="list-style-type: none"> Reposition the washer Replace the washer Tighten them
The warning signal is beeping quickly LED green flash	<ul style="list-style-type: none"> The Ozone Generator has reached its life-span 	<ul style="list-style-type: none"> Call for service
The warning signal is beeping slowly LED red	<ul style="list-style-type: none"> Control valve is not set to filter function Water hose is broken No water flow Dirty filter Air flow switch is broken The control valve is set to Closed 	<ul style="list-style-type: none"> Set to filter function Replace water hose Check no water flow part as above Backwash Replace the air flow switch Set to filter function
The Ozonator does not start automatically after 24 hours	<ul style="list-style-type: none"> During the operation time or standby mode the sand filter is switched off, this interfered with the reset of the operation time and 24 hours automatic cycle. The Flowclear Sand Filter with Ozonator is unplugged or switched Power failure Flowclear Sand Filter with Ozonator broken 	<ul style="list-style-type: none"> The 24 hours automatic cycle will restart at the time that the sand filter is restarted. Plug in or switch on the Flowclear Sand Filter with Ozonator Check power source Call for service

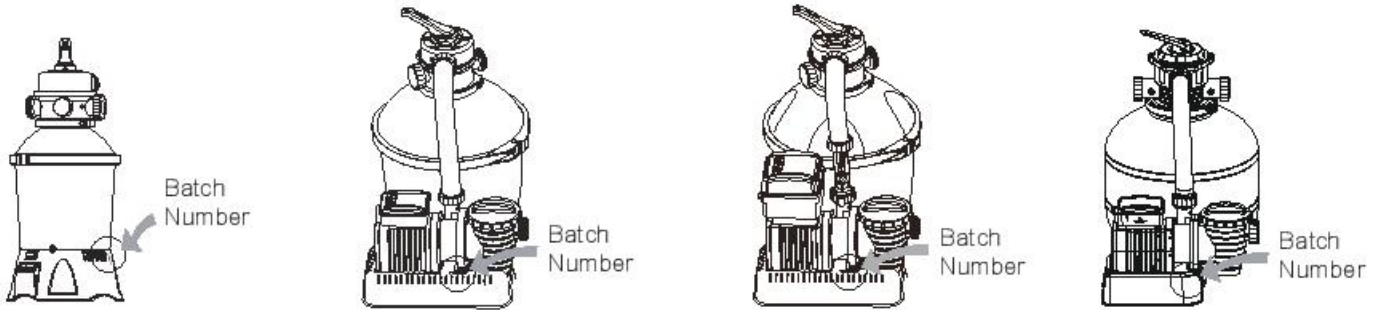
Limited BESTWAY® Manufacturer's Warranty

The product you have purchased comes with a limited warranty. Bestway® stands behind our quality guarantee and assures, through a replacement warranty, your product will be free from manufacturer's defects that result in leaks. To enact a warranty claim, this form must be completed and submitted with a copy of your purchase receipt to your local Bestway After Sales Center. Please contact your local Bestway After Sales Center before sending any document, they will provide full instructions of what is needed for your claim. Bestway® will not replace any products deemed to have been damaged due to negligence or having been used outside of the owner's manual guidelines. Bestway's warranty covers manufacturing defects discovered while unpacking the product or during use as recommended within the user manual, this warranty applies only to product which have not been modified by any 3rd parties. The product must be stored and handled in accordance with the technical recommendations.

The warranty does not cover damages caused by misuse, abuse, neglect, including, but not limited to collision, fire, use of incorrect voltage, excessive heat exposure, improper installation, improper wiring or testing, or improper storage.

Replacements and repairs don't extend the duration of the warranty. The date to be considered as the start of the warranty is only the one shown in the original receipt/purchase invoice.

Please copy the Batch Number located on the body of the sand filter.



Batch Number: _____ Date of purchase receipt: _____

TO: BESTWAY® SERVICE DEPARTMENT DATE: _____ Customer Code Number: _____

FAX/E-MAIL/TEL: Please refer to your country according to the information you find on the back cover or on our website: www.bestway-service.com

Please provide your address details in full. Note: Incomplete address details will result in delayed shipments.

Bestway reserves the right to charge for redelivery of undelivered packages where the recipient is at fault.

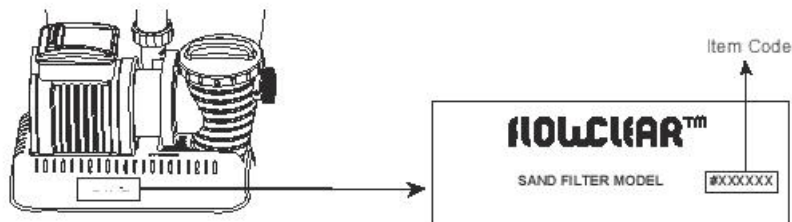
REQUIRED INFORMATION -- PLEASE WRITE THE DELIVERY ADDRESS

Name: _____ Address: _____ Zip code: _____

Country: _____ City: _____ Mobile: _____

Telephone: _____ Fax: _____ E-mail: _____

Retailer: _____ Please Clearly Write Your Item Code: _____



All drawings for illustration purpose only. Not to scale.

Description of problem

- Water leaking
- Stopped working
- Item is incomplete, Which part is missing – Please put the code you find on the instruction manual _____
- Others, please describe _____

IMPORTANT: ONLY THE DAMAGED PART WILL BE REPLACED, NOT THE COMPLETE SET.

Bestway reserves the right to request photographic evidence of defective parts, or to require the sending of the item for additional testing. In order to best assist you, we request all information you provide is complete.

FOR FAQ, MANUALS, VIDEOS OR SPARE PARTS, PLEASE VISIT OUR WEBSITE WWW.BESTWAY-SERVICE.COM.
VIDEOS ARE ALSO AVAILABLE ON OUR BESTWAY CHANNEL ON YOU TUBE: <http://youtube.com/user/BestwayService>.





Authorized Service Centers
Centres de Service Après-vente Agrées
Autorisierte Kundendienstzentren
Centri di Assistenza Autorizzati
Geautoriseerde Servicecentra
Centros de Asistencia Técnica autorizados
Autoriserede Servicecentre
Centros de Assistência Autorizados
ΕΞΟΥΣΙΟΔΟΤΗΜΕΝΑ ΚΕΝΤΡΑ
ΕΞΥΠΗΡΕΤΗΣΗΣ
Авторизованные Сервисные Центры
Autorizovaná Servisní Střediska
Autoriserte Servicecentre
Auktoriserade Servicecenter

Valtuutetut Palvelukeskukset
Autorizované Servisné Strediská
Autoryzowane Centra Serwisowe
Hivatalos Szervizközpontok
Pilnvaroti Pakalpojuma Centri
Igaliotieji Aptarnavimo Centrai
Pooblašćeni Serviserji
Yetkili Hizmet Merkezleri
Centre de Service Autorizate
Оторизирани Сервисни Центрове
Ovlašćeni Servisni Centri
Volitatud Hoolduskeskused
Autorizovani Servisni Centri

Albania
Phone: (+355) 682003429
Fax: (+386) 056621203
E-mail: servis@bestway.si

Argentina
Phone: (+54) 1159843871
E-mail:
argentina@bestway-southamerica.com

Australia
Phone: (+61) 290371388
Fax: (+61) 297379423
E-mail:
aftersales@bestway-australia.com

Austria
Phone: (+43) 720882434
Fax: (+43) 720882435
E-mail: austria@bestway-service.com

Belgium
Phone: 0 800 20 132
Fax: (+32) 026104411
E-mail:
belgiumservice@bestway-europe.com

Bosnia
Phone: (+387) 039670935
Fax: (+386) 056621203
E-mail: servis@bestway.si

Brazil
Phone: 0800 001 8400
E-mail: sac@bestway-brazil.com

Bulgaria
Phone: (+359) 879012892
Fax: (+359) 29250232
E-mail: bulgaria@bestway-service.com

Canada
Phone: 1 855 838 3888
Fax: 1 480 838 1888
E-mail:
info@bestway-northamerica.com

Chile
Phone: (+56) 2232036438
E-mail:
postventa@bestway-southamerica.com

Colombia
Phone: (+57) 13441717
E-mail:
colombia@bestway-southamerica.com

Croatia
Phone: (+385) 0997930168
Fax: (+386) 056621203
E-mail: servis@bestway.si

Cyprus
Phone: (+357) 22 426803
(+357) 22 423824
Fax: (+357) 22 495137
E-mail: cyprus@bestway-service.com

Czech Republic
Phone: (+420) 0387020573
E-mail:
pomocservis@bestway-service.com

Denmark
Phone: (+45) 33321019
Fax: (+45) 33321036
E-mail: denmark@bestway-service.com

Finland
Phone: (+358) 504104403
E-mail: finland@bestway-service.com

France
Phone: 0892707709 (0,34 TTC/MINUTE)
Fax: (+33) 0489069991
E-mail: sav@bestway-france.com

Germany
Phone: (+49) 6946001281
Fax: (+49) 6946001282
E-mail:
kundendienst@bestway-europe.com

Greece
Phone: 00 800 391.275.300
Fax: (+39) 0291390361
E-mail: ipostirixis@bestway-service.com

Hungary
Phone: (+36) 0640204624
E-mail: hungary@bestway-service.com

Iceland
Phone: (+46) 8 506 691 90
Fax: (+46) 506 690 99
E-mail: sweden@bestway-service.com

Ireland
Phone: 8006120457
Fax: (+44) 01626835736
E-mail: aftersales@bestway-uk.com

Italy
Phone: (+39) 0236265839
Fax: (+39) 0291390361
E-mail:
assistenza@bestway-europe.com

Macedonia
Phone: (+389) 032386235
Fax: (+386) 056621203
E-mail: servis@bestway.si

Malta
Phone: (+356) 27438201/21499101
Fax: (+356) 21496206
E-mail: info@model-toys.com

Mexico
Phone: (+52) 5541693920
Fax: (+52) 8183463416
E-mail: info@bestway-mexico.mx

Moldova
Phone: (+373) 68535552
E-mail: Moldova@bestway-service.com

Netherlands
Phone: 8002378929
Fax: (+31) 887878969
E-mail:
dutchservice@bestway-europe.com

New Zealand
Phone: 0800 142 101
E-mail:
aftersales@bestway-australia.com

Norway
Phone: (+47) 22650122
Fax: (+47) 22721127
E-mail: norway@bestway-service.com

Peru
Phone: (+51) 17089795
E-mail:
peru@bestway-southamerica.com

Poland
Phone: (+48) 327505320 / 322326040
Fax: (+48) 327505330
E-mail: servis@bestway-service.com

Portugal
Phone: (+351) 707506692
Fax: (+34) 902602705
E-mail: sac@bestwayiberica.com

Romania
Phone: (+40) 212525354 / 213362858
Fax: (+40) 212525353 / 213362854
E-mail:
suportclienti@bestway-service.com

Russia (Россия)
Phone: +7 (495) 978-90-88
E-mail: info@bestway-service.ru

Serbia and Montenegro
Phone: (+381) 0656644962
(+386) 056621206
Fax: (+386) 056621203
E-mail: servis@bestway.si

Slovak Republic
Phone: (+421) 0415078833
Fax: (+421) 0415078808
E-mail:
pomocservis@bestway-service.com

Slovenia
Phone: (+386) 056621206
Fax: (+386) 056621203
E-mail: servis@bestway.si

South Africa
Phone: (+27)-21-5771401
Toll-Free: 0800 224 881
Fax: (+27)-21-5774400
E-mail: sales@seagullindustries.co.za

Spain
Phone: (+34) 902351045
Fax: (+34) 902602705
E-mail: sac@bestwayiberica.com

Sweden
Phone: (+46) 8 506 691 90
Fax: (+46) 506 690 99
E-mail: sweden@bestway-service.com

Switzerland
Phone: (+41)(0)719290000
Fax: (+41)(0)719290090
E-mail:
switzerland@bestway-service.com

Turkey
Phone: (+90) 02126444600
Fax: (+90) 02125550224
E-mail:
teknikservis@bestway-service.com
bestway@feyzaticaret.com

Ukraine
Phone: (+38) 0577597227
(+38) 0677033206
E-mail:
service@bestway-ukraine.com.ua

United Kingdom
Phone: 08455760116
Fax: (+44) 01626835736
E-mail: aftersales@bestway-uk.com

USA
Phone: 1 855 838 3888
Fax: 1 480 838 1888
E-mail:
info@bestway-northamerica.com