



MORRIS

STAND FAN OPERATING INSTRUCTIONS

MODELS: MFS-16245 / MFS-16246



READ THESE INSTRUCTIONS CAREFULLY AND STORE THEM FOR FUTURE REFERENCE!

SAFETY INSTRUCTIONS

When using electrical appliances, basic precautions should always be followed to reduce the risk of fire, electric shock and injury to persons, including the followings:

1. To prevent fire or shock hazard, **DO NOT** expose this appliance to rain or moisture.
2. Dangerous high voltages are present inside this enclosure. To avoid electric shock, **DO NOT** open the cabinet, refer servicing to qualified personnel only.
3. This appliance is intended for household use only and not for commercial, industrial or outdoor use. Other use not recommended may cause fire, electric shock or injury.
4. Ensure the fan is not placed near drapes, curtains or any objects that may be drawn into the fan.
5. To protect against fire, electrical shock and injury to persons, do not immerse the unit, plug or cord in water or spray it with liquids.
6. The apparatus shall not be exposed to dripping or splashing and no objects filled with liquids, such as vases, shall be placed on the product.
7. No naked flames sources, such as candles, should be placed on the product.
8. Ventilation should not be impeded by covering the ventilation openings. Slots and opening are provided for ventilation to ensure reliable operation of the product and to protect it from overheating.
9. Care required with the use of this apparatus in tropical climates. Do not use the appliance to temperatures over 40 °C.
10. Place the fan on a stable level and dry surface when operating to avoid overturning.
11. Only connect to a suitably AC 220-240V~50Hz mains socket.
12. Do not operate the fan in the presence of explosive and / or flammable fumes. Do not place the fan or any parts near an open flame, cooking or other heating appliance.
13. Do not operate the fan with a damaged cord or plug, after a malfunction or if it is dropped or damaged in any manner.
14. Do not operate the fan without the fan grilles properly in place.
15. Do not place the fan close to an open window. Rain splashing on the fan could cause an electric shock hazard.
16. Do not let the power cord hang over the edge of a table or counter or let it touch any hot surfaces.
17. Do not insert or allow foreign objects to enter the grille openings as this may cause damage to the appliance.
18. Do not use the fan if grille becomes damaged or loose.
19. This appliance can be used by children aged from 8 years and above and persons with reduced physical, sensory or mental capabilities or lack of experience and knowledge if they have been given supervision or instruction concerning use of the appliance in a safe way and understand the hazards involved. Children shall not play with the appliance. Cleaning and user maintenance shall not be made by children without supervision.
20. Children of less than 3 years should be kept away unless continuously supervised.

Children aged from 3 years and less than 8 years shall only switch on/off the appliance provided that it has been placed or installed in its intended normal operating position and they have been given supervision or instruction concerning use of the appliance in a safe way and understand the hazards involved. Children aged from 3 years and less than 8 years shall not plug in, regulate and clean the appliance or perform user maintenance.

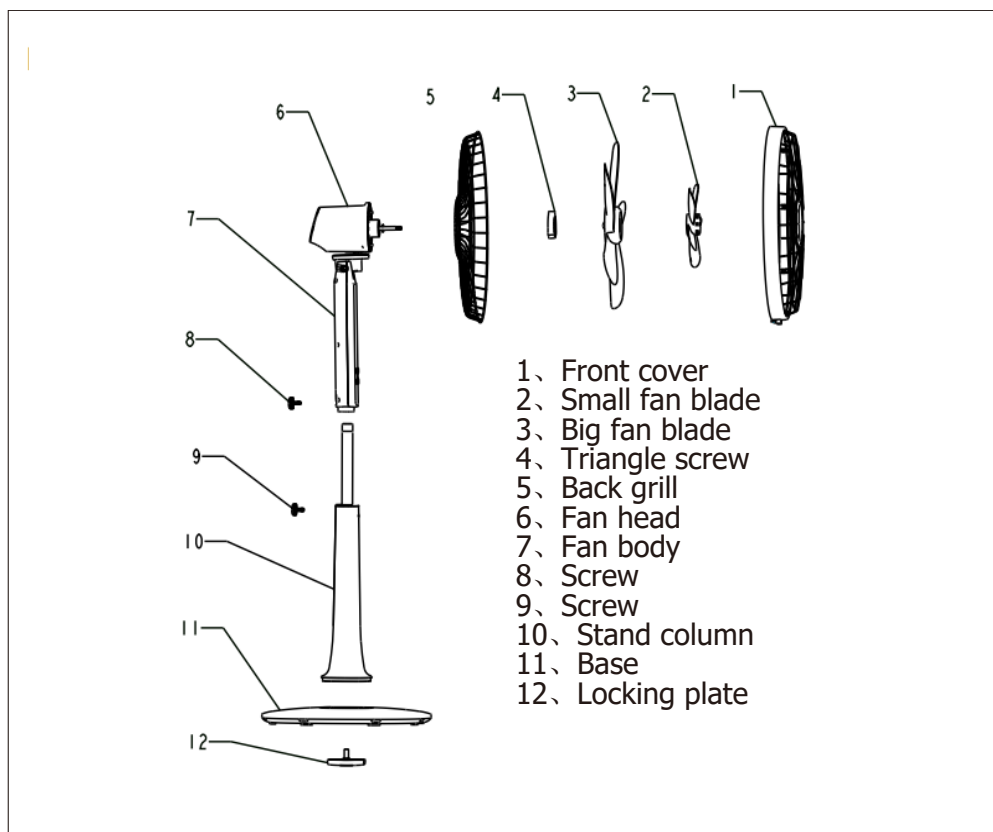
21. Switch the fan OFF and unplug it from the outlet when it is not in use, when moving fan from one location to another and before cleaning.
22. To disconnect, grip the plug and pull it from the wall outlet. Never pull by the cord.
23. Do not attempt to repair, disassemble or modify the appliance. There are no user-serviceable parts inside. Refer all servicing to qualified service personnel.

FOR HOUSEHOLD USE ONLY

SPECIFICATIONS

MODEL NO	RATED VOLTAGE	RATED POWER
MFS-16245 MFS-16246	220-240V~50HZ	28W

STRUCTURE AND PARTS



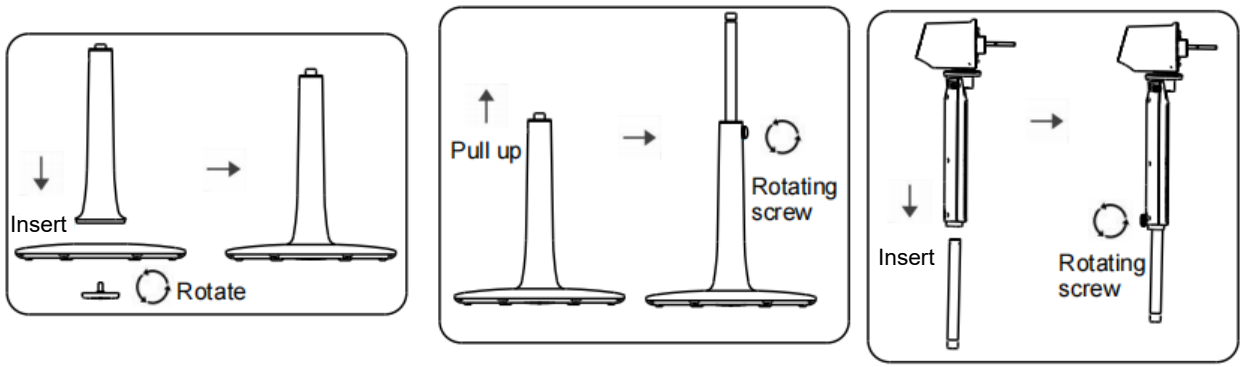
ASSEMBLY INSTRUCTIONS

The fan is packaged with its foundation and other parts unattached. You must attach them before operating the fan.

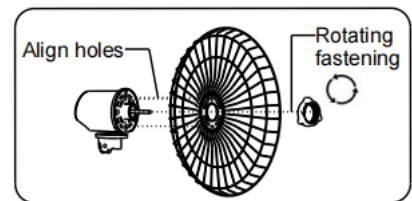
WARNING: Never operate the fan without its foundation and other parts attached. Fan should operate only in upright position; any other position could create a hazardous situation.

Assemble sequence of the foundation and other parts as follows:

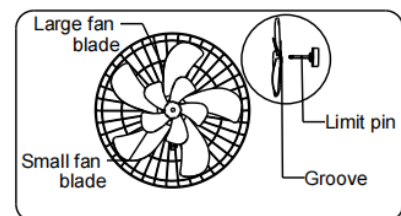
1. Unpack the fan and remove all parts from the package.
2. Use the bend bolt and the press plate provided, to attach the stand post parts onto the base.
3. Adjust the lift pole to the desired height, and then lock it with the locknut for lifting.
4. Loosen the locknut on the switch box and insert the lift pole into the hole located on the bottom of the switch box, then fasten the locknut back tightly.



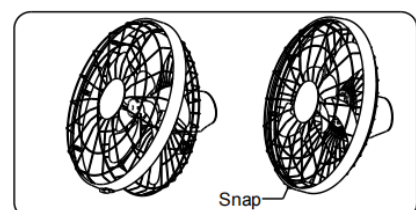
5. Take off the motor shaft cover from the fan head, and revolve the triangle screw off. Then take off the blade tie on the back grill, and let three columns into the three holes in place fully. Then, tighten the triangle screw counterclockwise.



6. Push the big fan blade onto the notch, until it is stuck on the stopper pin of the motor shaft, and then tighten the small fan blade counterclockwise.



7. To attach the front grill to the back grill, use carefully the grill ring to hold them together and fasten the grill ring with the screw provided.



INSTRUCTIONS FOR USE

ON / Stand-By Button

Press the ON button to start the unit. The unit will beep once and start to operate at Low speed setting at the default speed of 1 in Normal Mode.

Again upon pressing this button the unit will be turned off and will remain in stand-by.

Fan speed Button

Press Fan speed Button repeatedly to toggle between the 24 fan speeds.

SWING Button

Press the swing button and the fan head will oscillate horizontally through approximately 90° angle in both the directions (Left-Right).

Timer Button

Press the timer button repeatedly to obtain the desired operating time. (1 hour to 24 hours). Each time the button is pressed the time interval is incremented upwards by 1hrs. The display panel will indicate timer value.

Timer ON Feature:

Select the time after which you want to operate the fan after the selected time is elapsed the fan the unit will operate in normal mode at the speed of 1.

While the unit is in standby mode press the timer button once and the display will show up the selected time in hours. Press the same timer button to select the desired time after which you want the fan to start; the time can be selected from 1 to 24hrs. The fan will start to operate once the selected time is elapsed.

Timer OFF Feature:

While the fan is operating press the timer button, the timer OFF indicator will illuminate and the display will show up the selected time (in hours).

Press the timer button to select the desired time after which you want the fan to stop; the time can be selected from 1 to 24hrs. Once the selected time is reached, the fan will turn itself off and will remain in standby mode.

Mode Button

Press the mode button repeatedly to select the desired mode of operation. The fan can be set to run in four different modes of operation: Normal, Natural, Sleep and Breeze. The icon corresponding to selected mode will appear on the display panel.

Normal Mode

Press the Mode button that the Fan will be set at the speed of 1 by default. The Fan speed can be adjusted from 1 to 24 as per the requirements.

In this mode the fan will run at constant speed at which it is set.

Natural Mode

In this mode the fan will operate in a preset program which varies the speed of the fan giving a natural breeze effect. Based on the fan speed the fan will operate in one of the following modes:

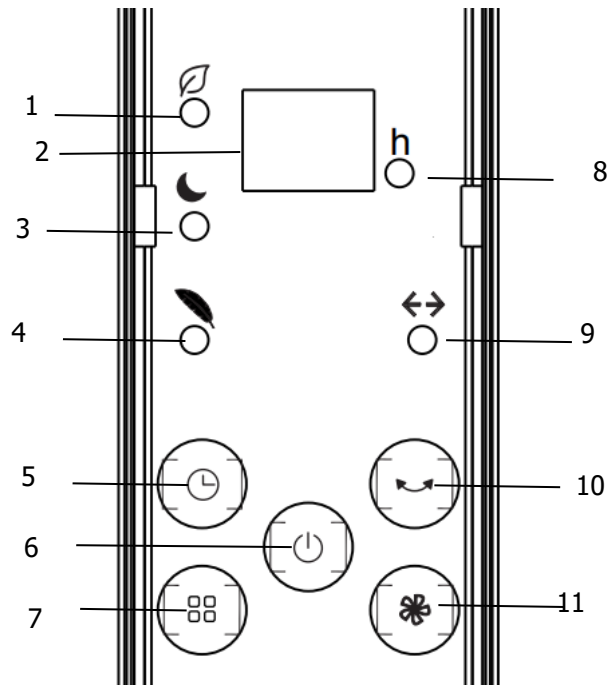
Sleep mode

The appliance transitions automatically to low fan speed natural mode in accordance with the sequences depending on the already chosen fan speed to reduce energy consumption and noise level.

Breeze mode

The appliance will always been lowest fan speed. Constant soft airflow.

Display panel

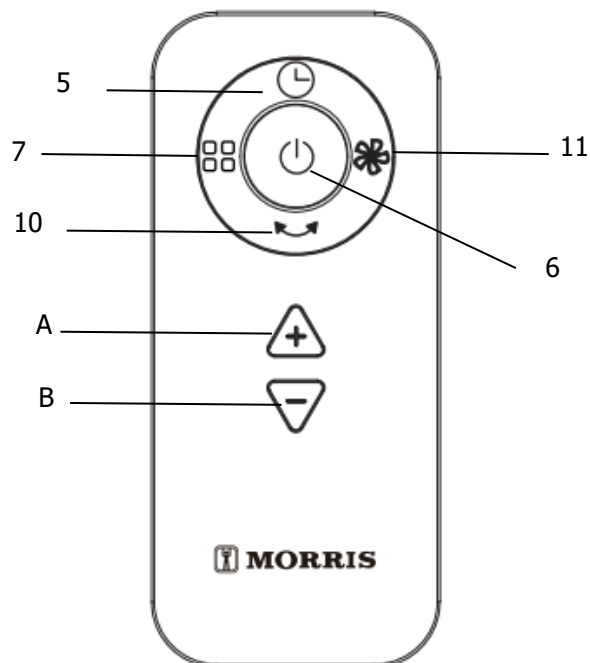


1. Natural mode indicator light
2. Fan speed & timer digits
3. Sleep mode indicator light
4. Breeze mode indicator light
5. Timer button
6. ON / Stand-By Button
7. Mode button
8. Timer indicator light
9. Swing indicator light
10. Swing button
11. Fan speed button

Note:

After 60 seconds of inactivity the digital display will go into standby.

Remote control



A & B: Upper / Lower button (+/-)
To adjust fan speed and timer

MAINTENANCE

- Always turn off the fan and remove the plug from the socket-outlet before cleaning.
- Clean the external surfaces of the fan with a soft damp (not dripping wet) cloth.
WARNING:
Do not immerse the fan in water.
Do not use any cleaning chemicals such as detergents and abrasives.
Do not allow the interior (special for the PCB) to get wet as this could create a hazardous situation.
- When the unit is not in use, make sure that it is unplugged from the wall socket. To store the fan, you may pack it in the original carton and store it in a cool and dry place until later use.
- In case of malfunction or doubt, do not try to repair the fan yourself; it may result in a fire hazard or electric shock.

NOTICE ABOUT RECYCLING



Your product is designed and manufactured with high quality materials and components which can be recycled and reused.

This symbol means that electrical and electronic equipment, at their end-of-life, should be disposed of separately from your household waste. Please dispose of this equipment at your local community waste collection/

recycling centre.

In the European Union there are separate collection systems for used electrical and electronic products.

Please help us to conserve the environment we live in!

DECLARATION OF CONFORMITY

Herewith, Kalliopi Karyda & Co Lp states that this product, complies with the requirements of below directives:

EMC-Directive: 14 / 30 / EU

Low Voltage Directive: 14 / 35 / EU

ErP Directive 09 / 125 / EC

CE Marking: 93 / 68 / EEC

RoHS Directive: 11 / 65 / EU & 15 / 863 / EU

The detailed declaration of conformity can be found at www.morris.gr



Exclusive Importer in Greece:

Kalliopi Karyda & Co., LP

87A, 17th Noemvriou str, P.C. 55534

Pylea – Thessaloniki – Greece

T: +302316006600 | F: +302316006650

www.morris.gr