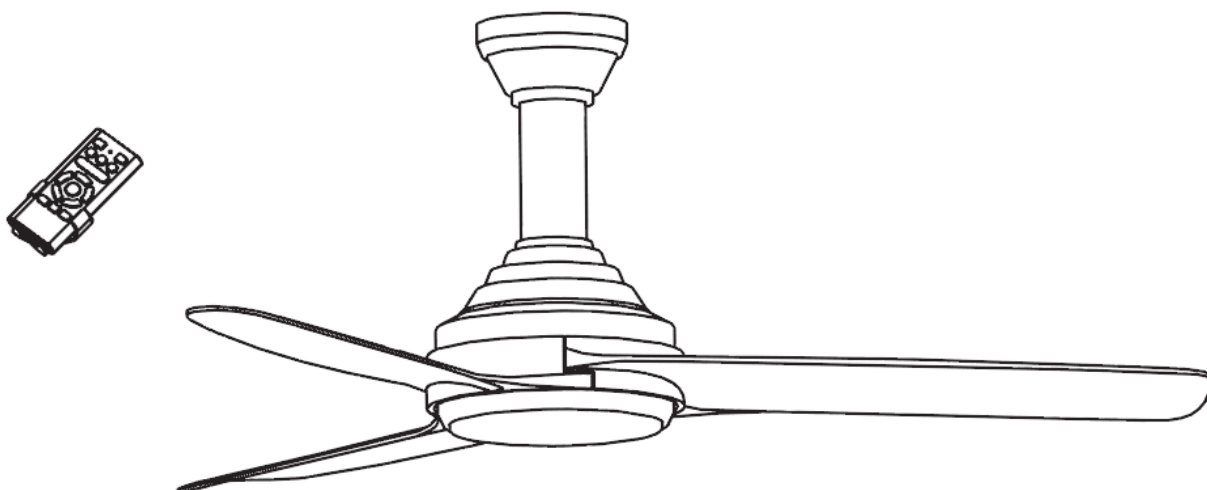




MORRIS

52" CEILING FAN WITH LED LIGHT INSTRUCTIONS MANUAL



MODELS: MCF-16233 / MCF-16234

Read these instructions carefully and keep them for future reference

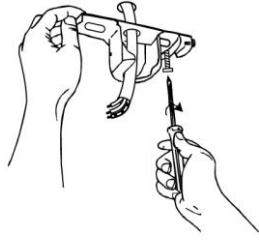
SAFETY INSTRUCTIONS

Warning: To reduce the risk of fire, electric shock, or personal injury, read the following instructions very carefully:

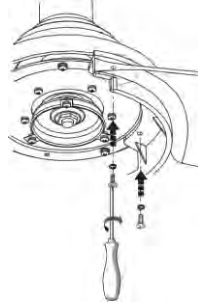
READ THESE INSTRUCTIONS

1. The fan should not be connected to any power point. Install the fan on the ceiling.
2. The minimum distance between the blades and the floor must be 2.3m. If you use a hook to hang the fan, the maximum weight capacity is 100kg.
3. Make sure that you cap with wire connectors. Make sure to cap the wires you will not use with a wire connector.
4. Disconnect the fan from the mains power before mounting or repair.
5. The cable must be properly earthed in order to avoid any risk of electrocution.
6. All electrical connections must be in accordance with local and national Electrical codes
7. Installation by a qualified electrician is highly recommended.
8. Never install the fan in a room with a high degree of humidity.
9. Be careful when you are close to the fan blades.
10. If the supply cord is damaged it must be replaced by the manufacturer, its service agent or similarly qualified persons in order to avoid a hazard.
11. This appliance is designed for dry places (Don't use in wet places).
12. This appliance is not intended for use by persons (including children) with reduced physical, sensory or mental capabilities, or lack of experience and knowledge, unless they have been given supervision or instruction concerning use of the appliance by a person responsible for their safety.
13. Children should be supervised to ensure that they do not play with the appliance.
14. **WARNING:** In order to ensure children's safety, please keep the contents of the package out of their reach (plastic bags, polystyrene, boxes etc.).
15. **Important:** always turn off the electricity supply to the ceiling fan during installation or maintenance. It is recommended to remove the fuse or turn off the circuit – breaker connector when handling (switching it off is not enough).
16. Before operation make sure that all connections are secured, to prevent the fan from falling.

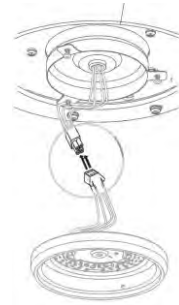
FAN INSTALLATION ILLUSTRATION



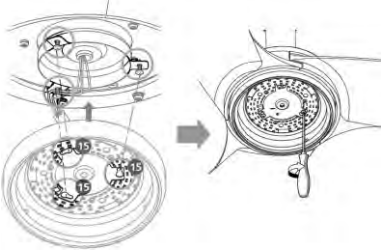
1. Secure the mounting plate to a ceiling joist with the two screws, spring washers and the flat washers provided. Ensure that the support for the mounting plate is capable of safely and securely hold the moving weight of the fan.



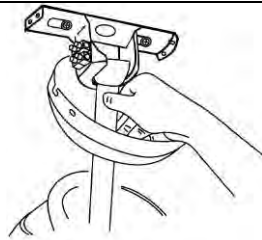
2. Fasten the blades to the motor with the screws and spring washers that are already attached to the motor.



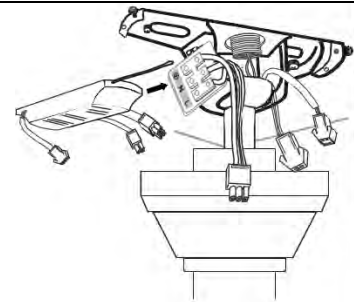
3. Connect the light kit by clipping together the two plastic male/female connectors.



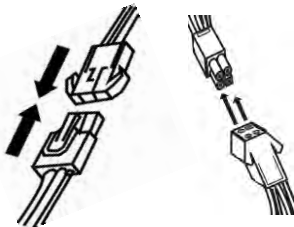
4. Fit the LED lamp panel to the lamp panel mounting bracket by using the three light kit-fixing screws and star washers. Ensure that wires are not trapped.



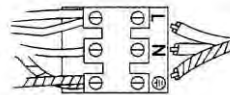
5. Hang the fan assembly onto the mounting plate. The lug of the mounting plate should be lined up with the corresponding groove on the ball joint of the fan assembly.



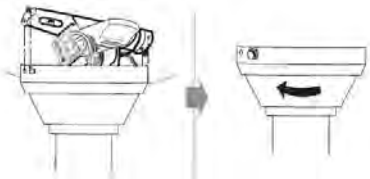
6. Insert the remote control receiver between the bracket and the ball joint, and the sensor as shown.



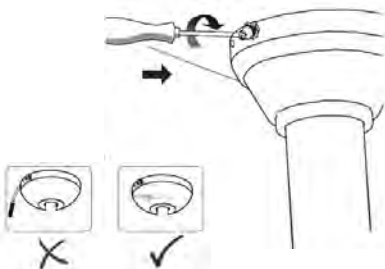
7. Insert all the male connector into the female connector (from the remote control receiver to the fan, and from the remote control receiver to the terminal block).



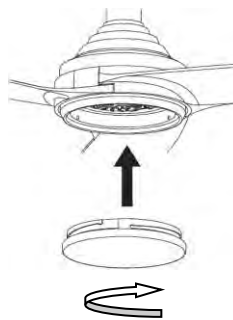
8. Connect the wires from the earthed mains supply to the terminal block.



9. Lift the fan until the screws reach the bottom of the slots and then rotate the canopy counterclockwise until the screws drop into the slot recesses.



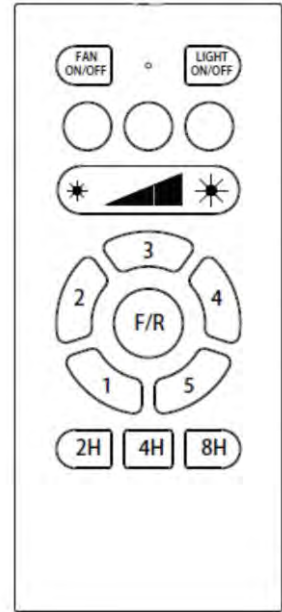
10. Insert the two sets of screws and washers. Tighten all the screws, making sure that the canopy is secure and that wires are not trapped. Ensure that the slot of the nylon ball hanger fits into the guide pin of the upper canopy.



11. Install the lampshade onto the shade gallery by rotating the lampshade clockwise.

REMOTE CONTROL

- Use the remote control transmitter to set the speed of the fan, to set the dimmer and to switch the light and fan on or off.
- Battery replacement: Open the battery compartment cover on the remote control transmitter in the direction of the arrow, fit 2 x “AAA” batteries, making sure that the polarity of the batteries match with the figures shown in the battery compartment. (Note: Batteries NOT included). Re-assemble the battery compartment cover.
- ALWAYS ensure that the battery compartment cover is properly closed.
- DON’T expose the remote control to direct sunlight.
- DON’T attempt to recharge expired batteries, there are special rechargeable batteries.
- DON’T dispose of batteries in fire, to avoid explosion.



OPERATING YOUR FAN

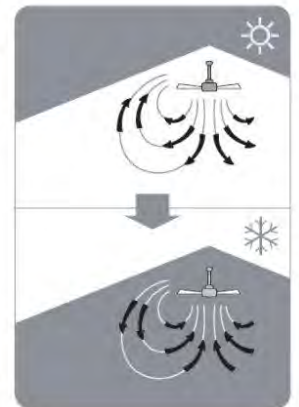
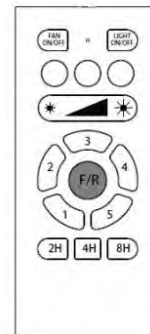
- There is a switch on the motor housing to set the rotation of the blades.

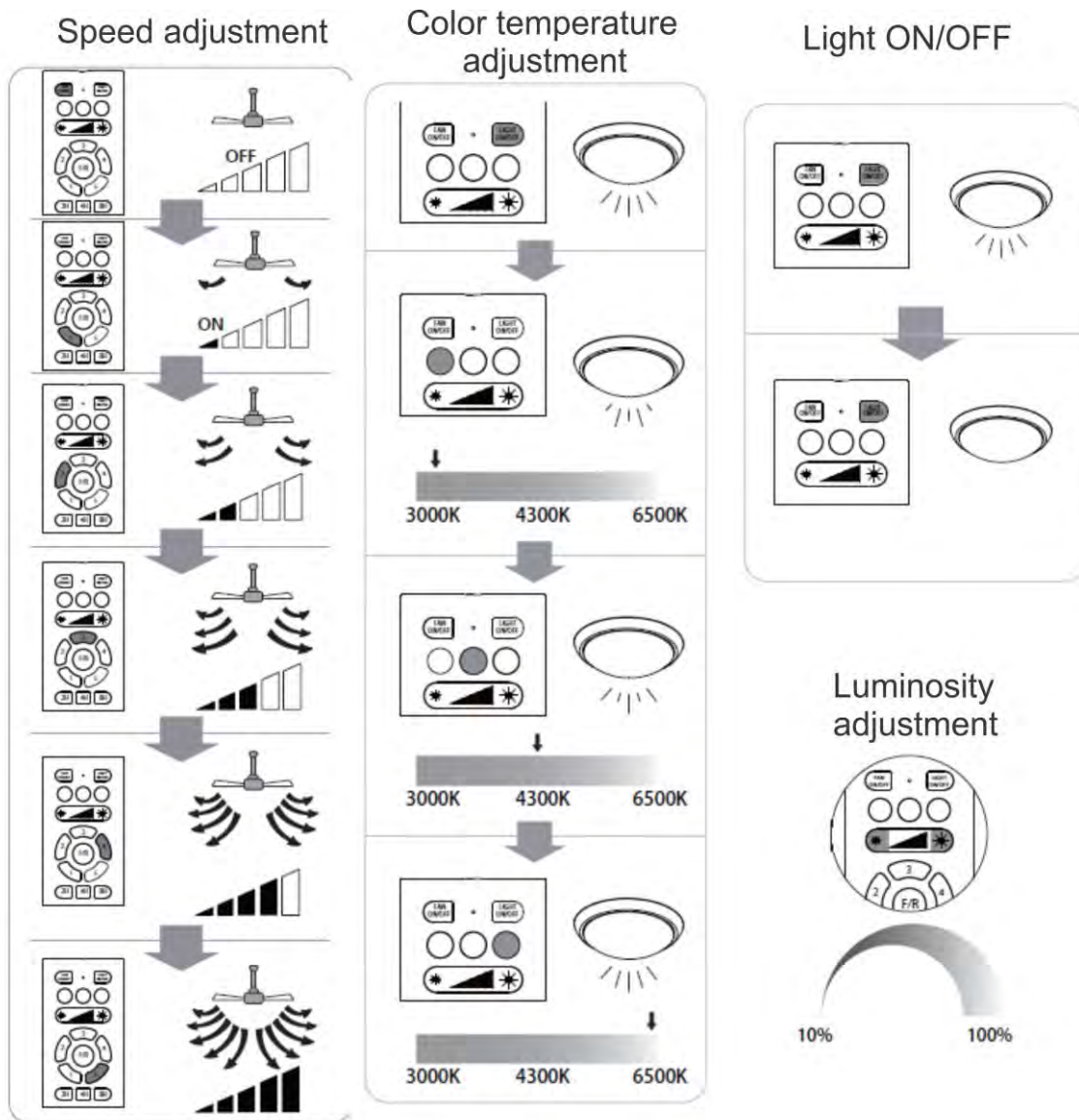
Note: Make sure that the fan stops operating before using the Direction Switch. In order to prevent any damage to the motor or injury to you, the switch should stay at the RIGHT or LEFT position when the fan is working.

Cold weather: Push switch to the “RIGHT” so that the blades move downwards the warm air trapped near the ceiling fan.

Hot weather: Push switch to the “LEFT” so that the blades create a breeze and circulate the air inside the room.

- You can also change the rotation of the blades from the remote control.

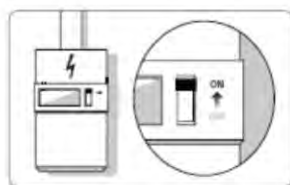




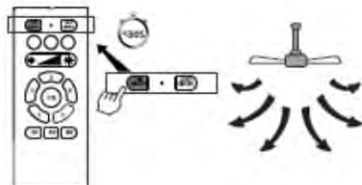
For the first use, the fan and the remote control are already paired. Pair setting maybe needed in following situations:



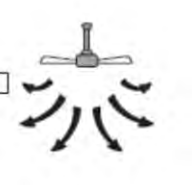
1. You would like to use one remote control to control more than one fan.
2. You get a new wireless remote control spare part



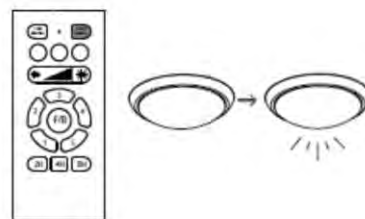
1. Turn ON the power supply switch



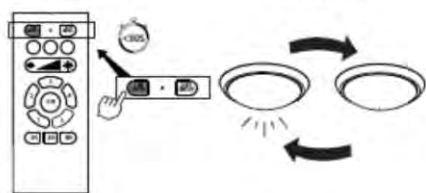
2.1 Long press the FAN ON/OFF key within 30 seconds



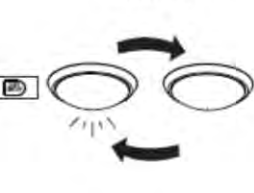
2.2 If the fan operates, it is paired successfully



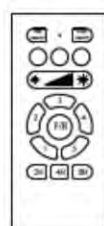
3. Press the LIGHT ON/OFF key to turn on the light.



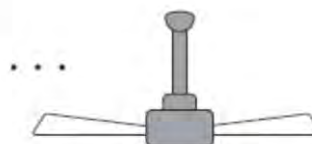
4.1 Long press the FAN ON/OFF key within 30 seconds



4.2 If the lamp flash once, it is paired successfully.



5. Paired successfully



NOTICE ABOUT RECYCLING



Your product is designed and manufactured with high quality materials and components which can be recycled and reused.

This symbol means that electrical and electronic equipment, at their end-of-life, should be disposed of separately from your household waste. Please dispose of this equipment at your local community waste collection/ recycling centre.

In the European Union there are separate collection systems for used electrical and electronic products.

Please help us to conserve the environment we live in!

DECLARATION OF CONFORMITY

Herewith, Amiridis-Savvidis S.A. states that this product, complies with the requirements of below directives:

EMC-Directive: 14 / 30 / EU

Low Voltage Directive: 14/ 35 / EU

ErP Directive 09 / 125 / EC

CE Marking: 93 / 68 / EEC

RoHS Directive: 11 / 65 / EU

The detailed declaration of conformity can be found at www.morris.gr



Exclusive importer in Greece:

Amiridis – Savvidis S.A.

87A, 17th Noemvriou str, P.C. 55534

Thessaloniki – Greece

T: +302310944944 | F: +302310944940

www.amiridis-savvidis.gr